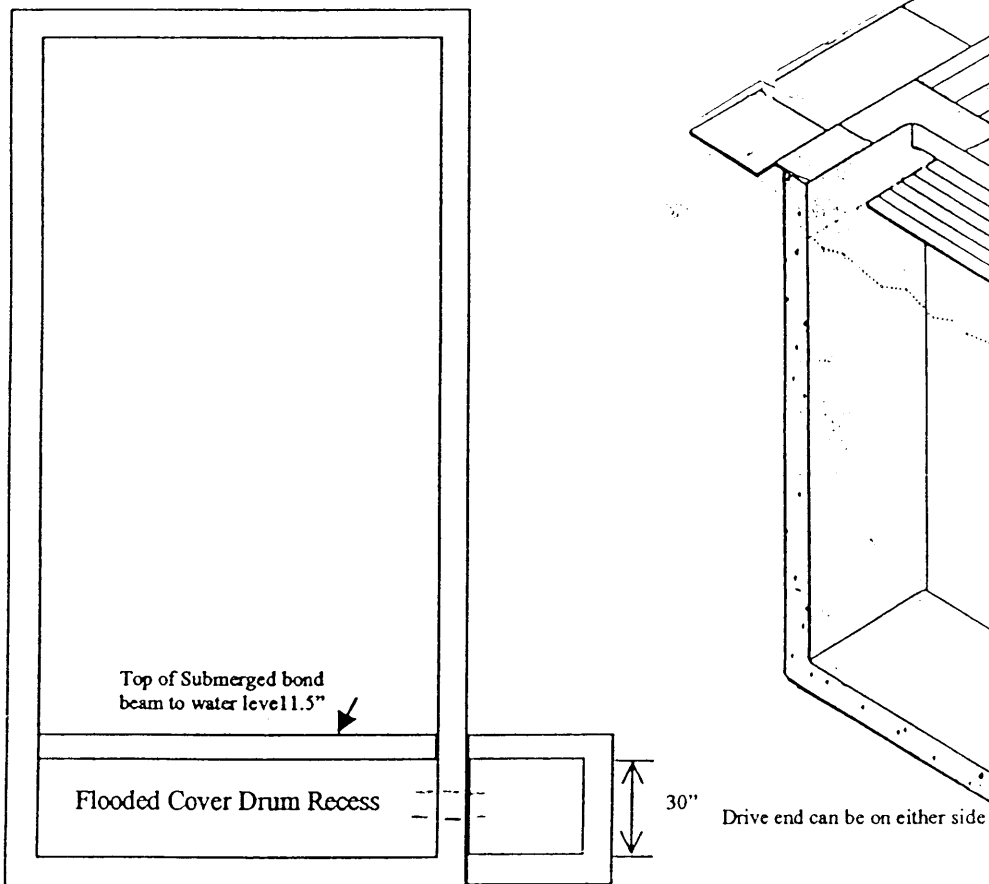
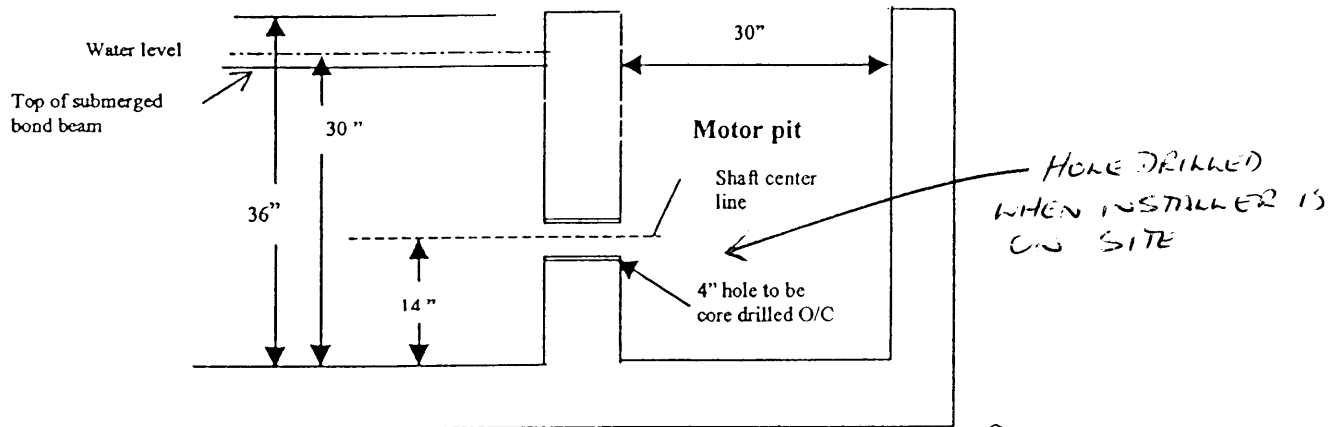


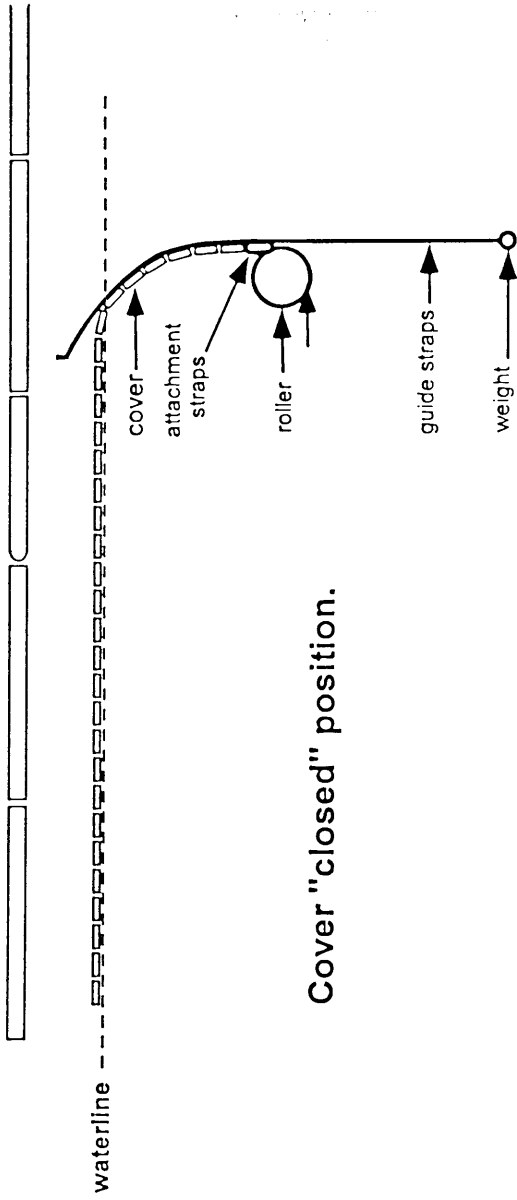
Construction Detail for HydraLux slat Covers –20 x40 pool



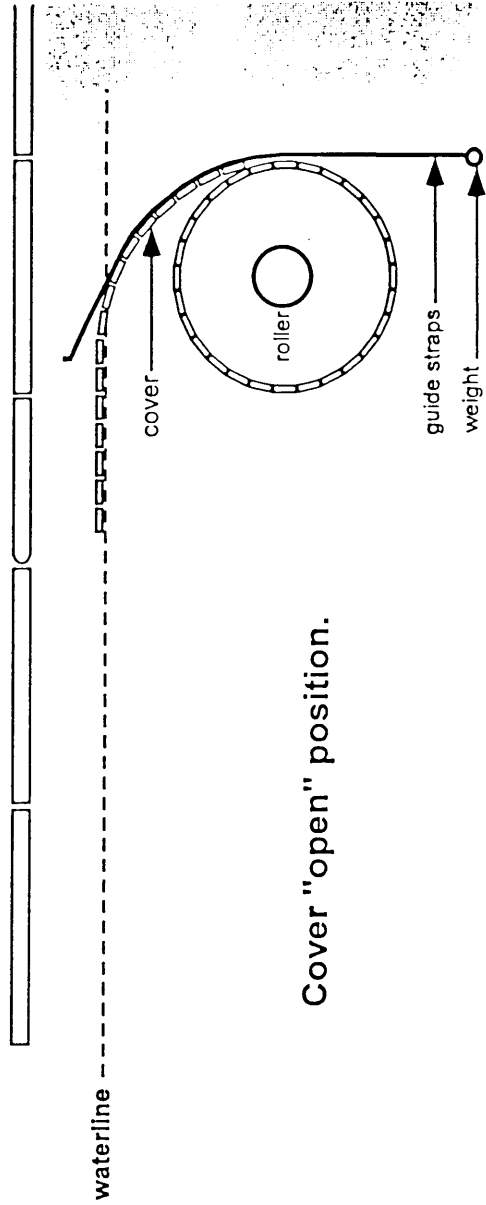
Specifications

1. A 4" inch hole will need to be core drilled for drive shaft from pool into pit.
2. Motor pit to have lid for rain protection
3. Supply 2" chase from motor pit to equipment pad for hydraulics. **Sweep turns only**
4. Separate switch and motor circuits at sub-panel
5. External motor pit must have adequate provision for drainage to prevent flooding
6. Level of submerged bond beam 1 ½ inches below water level. Slats can only touch water.
7. A skimmer behind the cover drum recess is recommended.
8. In-floor cleaning systems only, NO hose type of cleaners

THE COUNTER WEIGHT
IS FASTENED TO THE
UNDERSIDE OF THE COVER
LID BRACKET TO HELP
THE SLATTERED COVER
TO RUN IN AND OUT
SMOOTHLY.

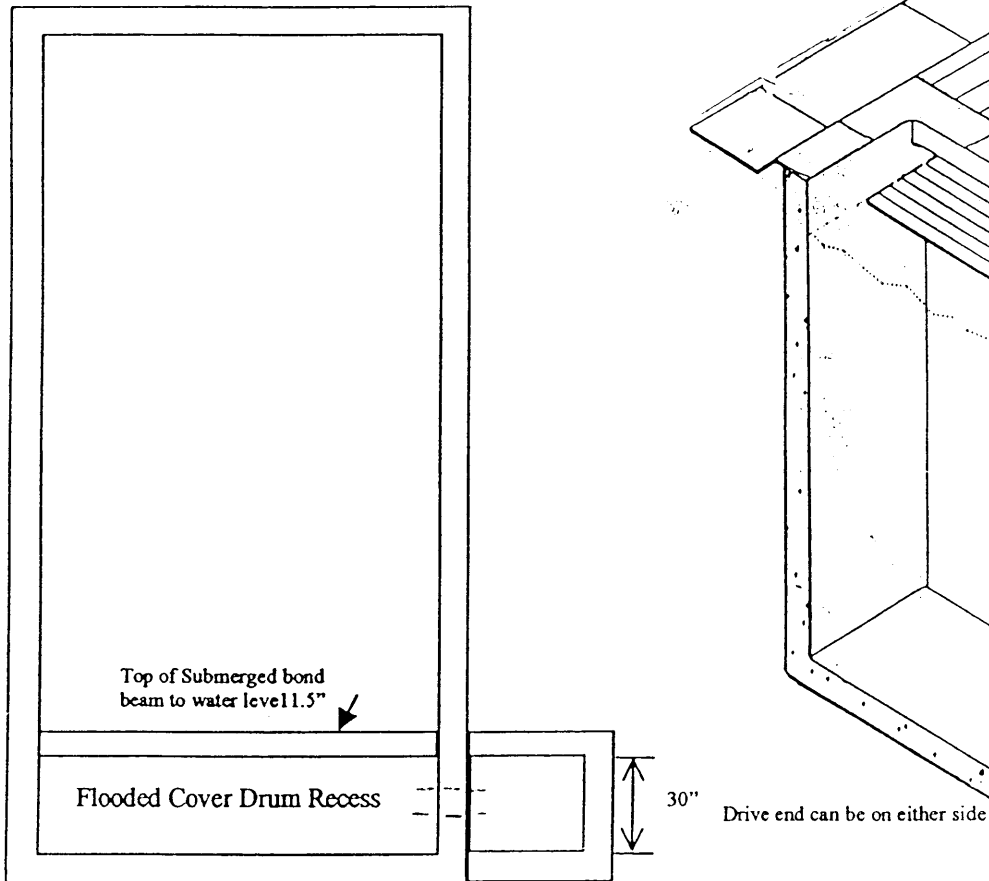
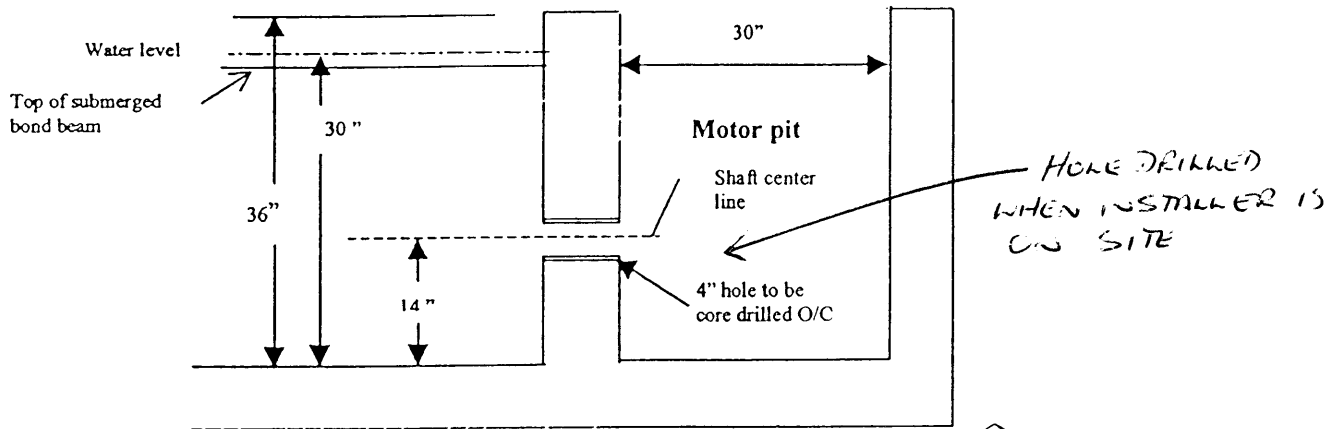


Cover "closed" position.



Cover "open" position.

Construction Detail for HydraLux slat Covers –20 x40 pool



Specifications

1. A 4" inch hole will need to be core drilled for drive shaft from pool into pit.
2. Motor pit to have lid for rain protection
3. Supply 2" chase from motor pit to equipment pad for hydraulics. ****Sweep turns only****
4. Separate switch and motor circuits at sub-panel
5. External motor pit must have adequate provision for drainage to prevent flooding
6. Level of submerged bond beam 1 ½ inches below water level. Slats can only touch water.
7. A skimmer behind the cover drum recess is recommended.
8. In-floor cleaning systems only, NO hose type of cleaners